

ZONING EXHIBIT THEATRE

Part of Parcel 2 of Certified Survey Map No. 1118, recorded in the Office of the Register of Deeds for Waukesha County as Document No. 750288, being a part of the Northwest 1/4 and Northeast 1/4 of the Northwest 1/4 of Section 10, Township 7 North, Range 17 East, in the City of Oconomowoc, Waukesha County, Wisconsin, which is bounded and described as follows:

COMMENCING at the Northeast corner of the Northwest 1/4 of said Section 10; thence South 00° 00' 37" West along the East line of said 1/4 Section a distance of 1416.77 feet to a point; thence North 89°59'23" West 208.86 feet to a point in the Westerly line of Summit Avenue; Thence South 30° 30' 28" West 53.00 feet to a point; thence South 65° 09' 54" West 17.90 feet to a point; thence South 09° 54' 32" East 4.26 feet to a point; thence South 65° 56' 10" West 40.41 feet to a point; thence North 13° 13' 10" West 243.64 feet to point; thence Northwesterly 170.05 along an arc of a curve whose center lies to the Southwest, whose radius is 2111.83 feet, and long chord bears North 33° 46' 43" West 170.00 feet to a point; thence South 89° 59' 48" West 683.97 feet to the point of beginning of lands to be described; thence South 28° 06' 03" East 72.27 feet to a point; thence South 00° 00' 12" East 56.53 feet to a point; thence South 89° 59' 48" West 225.98 feet to a point; thence North 00° 00' 12" West 141.71 feet to a point; thence North 89° 59' 48" East 56.50 feet to a point; thence South 00° 00' 12" East 21.42 feet to a point; thence North 89° 59' 48" East 135.44 feet to the point of beginning.

Said land contains 27,308 square feet or 0.6269 acres.

July 28, 2021

Drawing No. 167740-RMK

Line Table		
Line #	Direction	Length
L1	N89°59'23"W	208.86
L2	S30°30'28"W	53.00
L3	S65°09'54"W	17.90
L4	S09°54'32"E	4.26
L5	N65°56'10"E	40.41
L6	S28°06'03"E	72.27
L7	S00°00'12"E	56.53
L8	S89°59'48"W	225.98
L9	N00°00'12"W	141.71
L10	N89°59'48"E	56.50
L11	S00°00'12"E	21.42
L12	N89°59'48"E	135.44

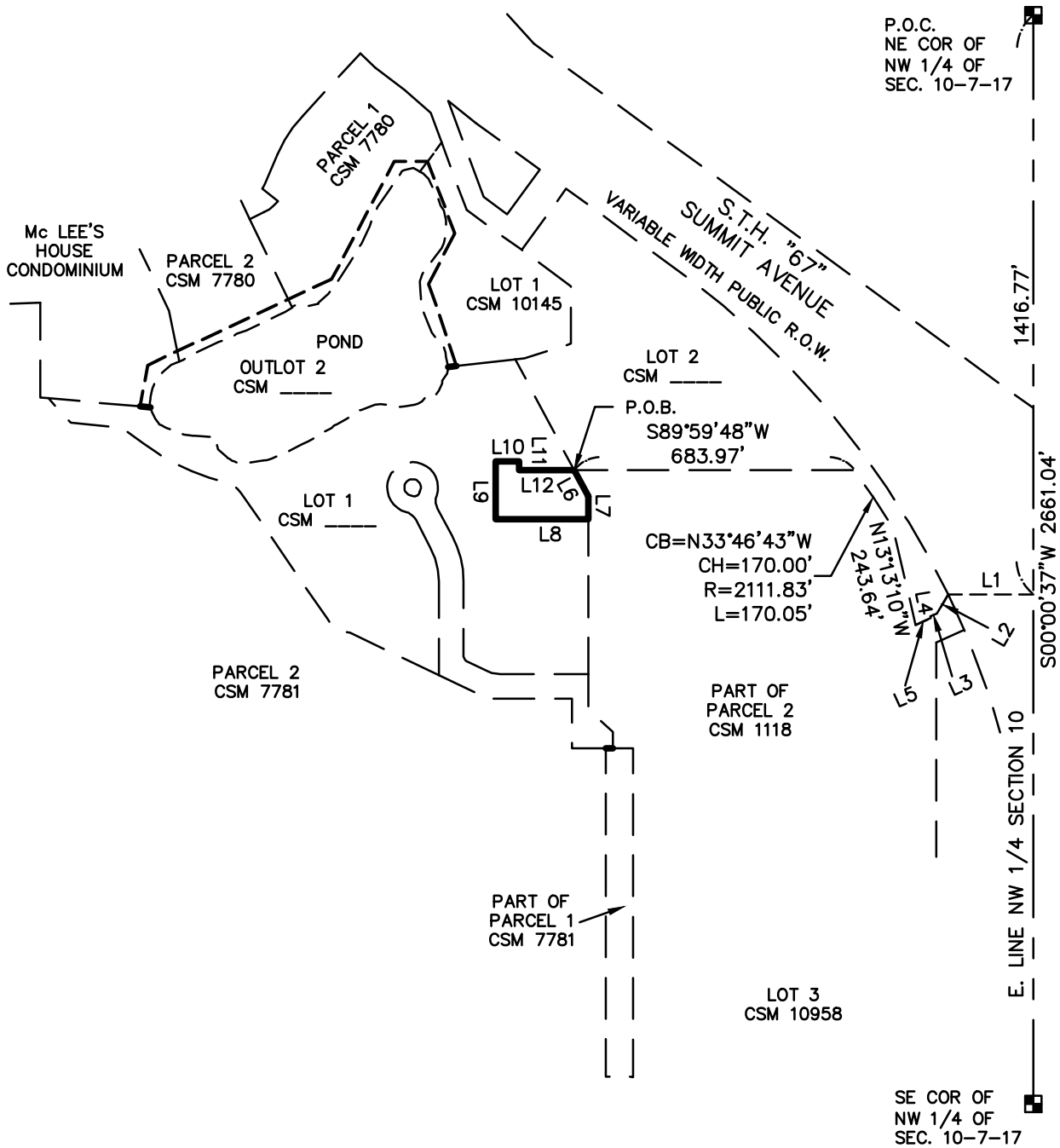


CREATIVITY BEYOND ENGINEERING

16745 W. Bluemound Road
Brookfield, WI 53005-5938
(262) 781-1000
rasmith.com

ZONING EXHIBIT

THEATRE



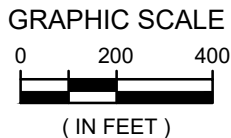
P.O.C.
NE COR OF
NW 1/4 OF
SEC. 10-7-17

1416.77'

S00°00'37"W 2661.04'

E. LINE NW 1/4 SECTION 10

SE COR OF
NW 1/4 OF
SEC. 10-7-17



raSmith
CREATIVITY BEYOND ENGINEERING

16745 W. Bluemound Road
Brookfield, WI 53005-5938
(262) 781-1000
rasmith.com