

ISSUED FOR
REVIEW

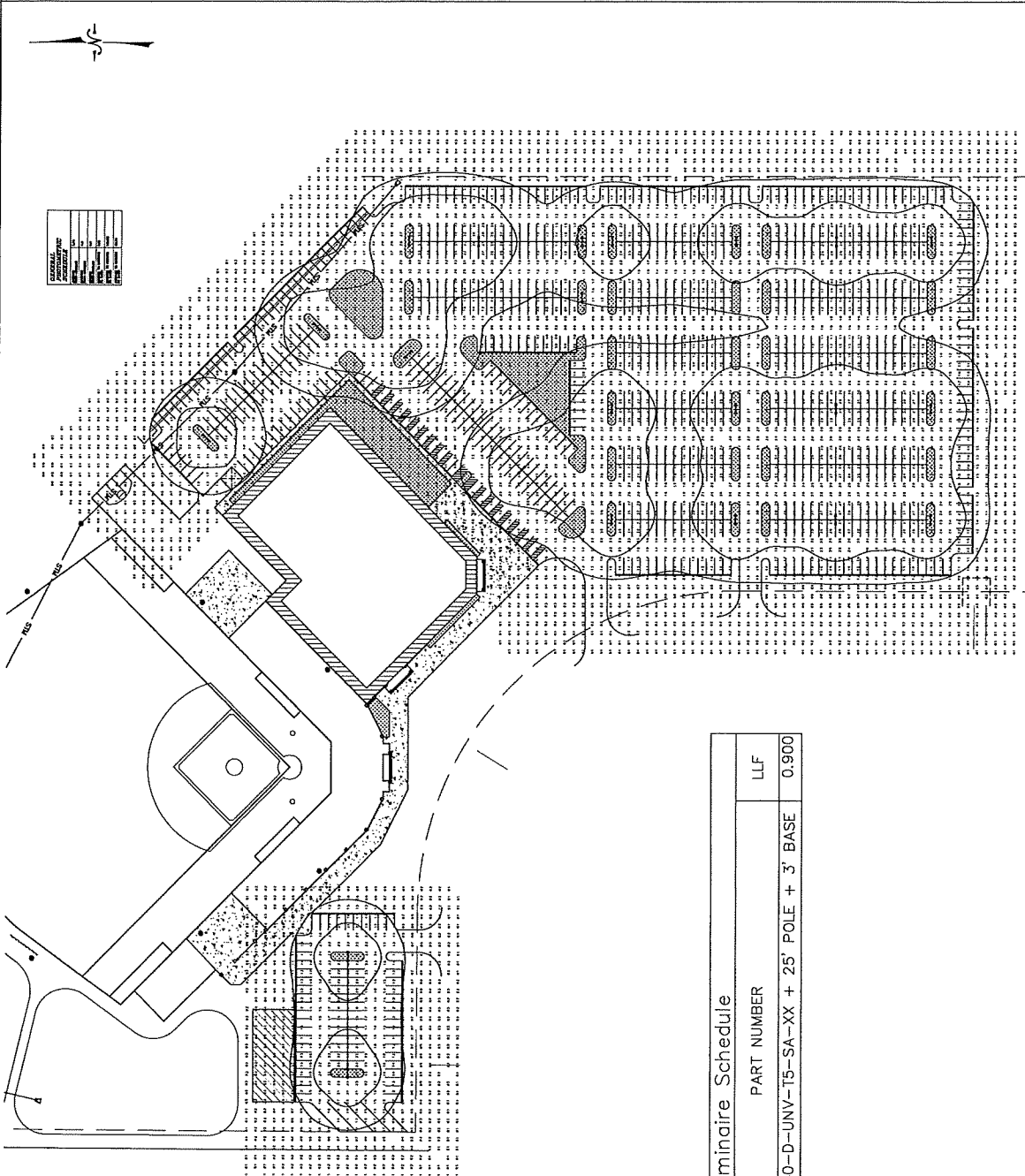
PLAN DATE 01.27.2010

DESIGNED BY JRM

SCALE 1" = 30'

PROJECT NO. 19-0054

SHEET NO. 1



Luminaire Schedule				
QTY	TYPE	MFR	PART NUMBER	LLF
20	T5-2	LUMARK	(2) ORV-C40-D-UNV-T5-SA-XX + 25' POLE + 3' BASE	0.900

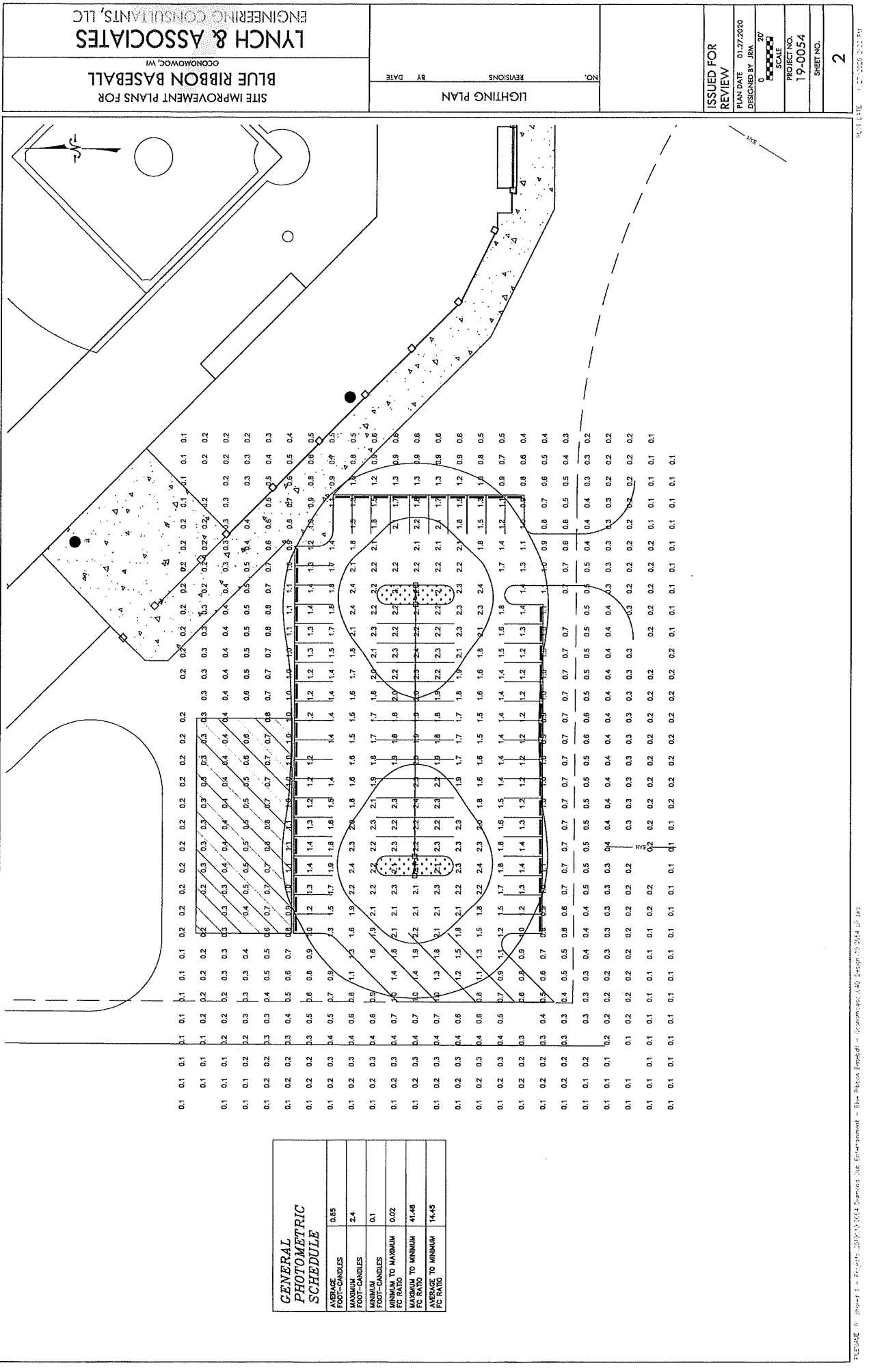
LUMINAIRE SCHEDULE				
QTY	TYPE	MFR	PART NUMBER	LLF
20	T5-2	LUMARK	(2) ORV-C40-D-UNV-T5-SA-XX + 25' POLE + 3' BASE	0.900

LUMINAIRE SCHEDULE				
QTY	TYPE	MFR	PART NUMBER	LLF
20	T5-2	LUMARK	(2) ORV-C40-D-UNV-T5-SA-XX + 25' POLE + 3' BASE	0.900

ENGINEERING CONSULTANTS, LLC
LYNCH & ASSOCIATES
 CONNORHOWC, WI

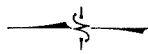
SITE IMPROVEMENT PLANS FOR
BLUE RIBBON BASEBALL

REVISIONS
 NO. BY DATE

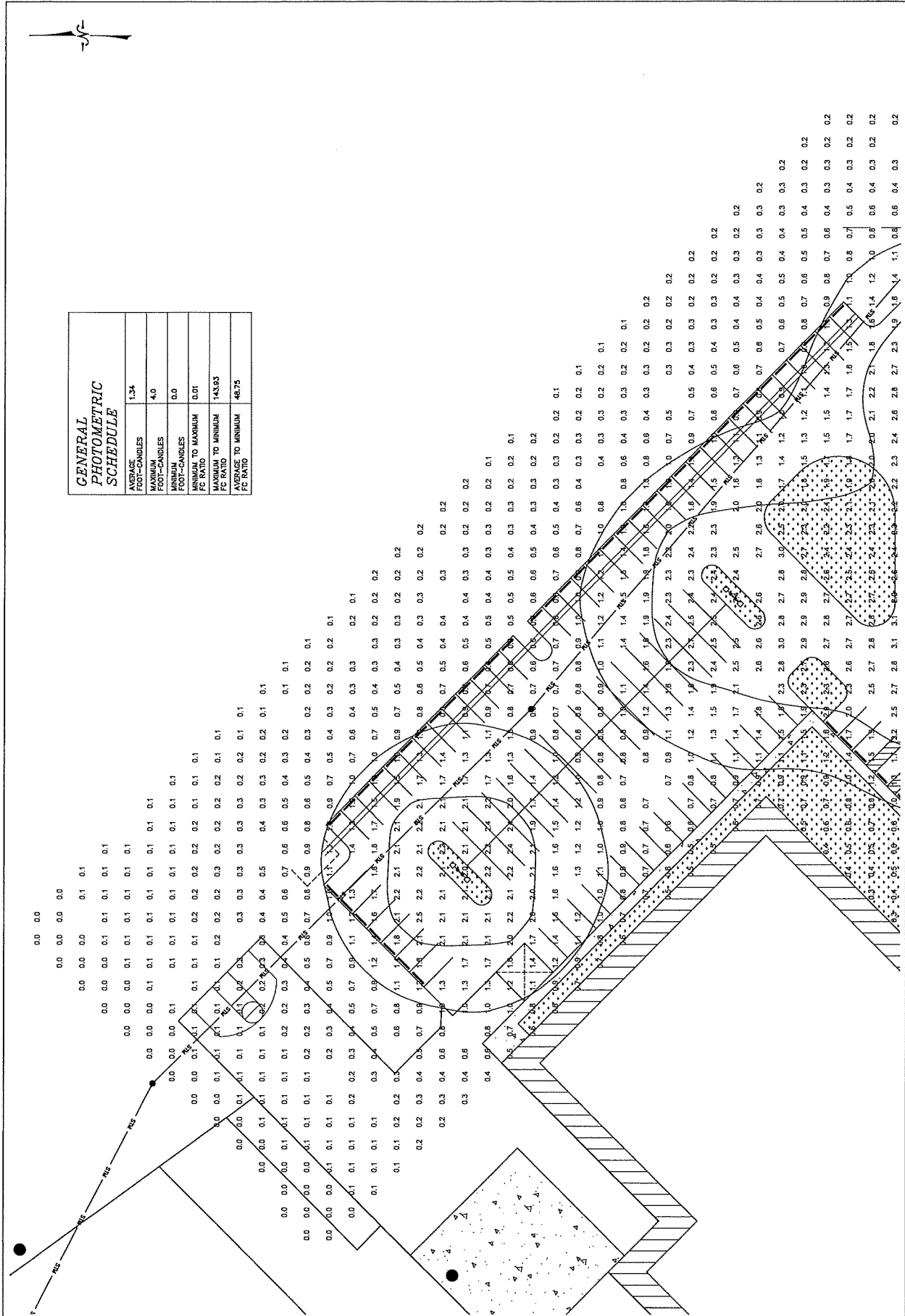


GENERAL PHOTOMETRIC SCHEDULE

FOOT-CANDLES	0.85
MAXIMUM FOOT-CANDLES	2.4
MINIMUM FOOT-CANDLES	0.1
MINIMUM TO MAXIMUM FC RATIO	0.02
MAXIMUM TO MINIMUM FC RATIO	41:48
AVERAGE TO MINIMUM FC RATIO	14:45



GENERAL PHOTOMETRIC SCHEDULE	
AVERAGE FOOT-CANDELES	1.34
MAXIMUM FOOT-CANDELES	4.0
MINIMUM FOOT-CANDELES	0.0
MINIMUM TO MAXIMUM FC RATIO	0.01
MAXIMUM TO MINIMUM FC RATIO	143.03
AVERAGE TO MINIMUM FC RATIO	46.75



BLUE RIBBON BASEBALL
SITE IMPROVEMENT PLANS FOR

ENGINEERING CONSULTANTS, LLC
 WISCONSIN, WI

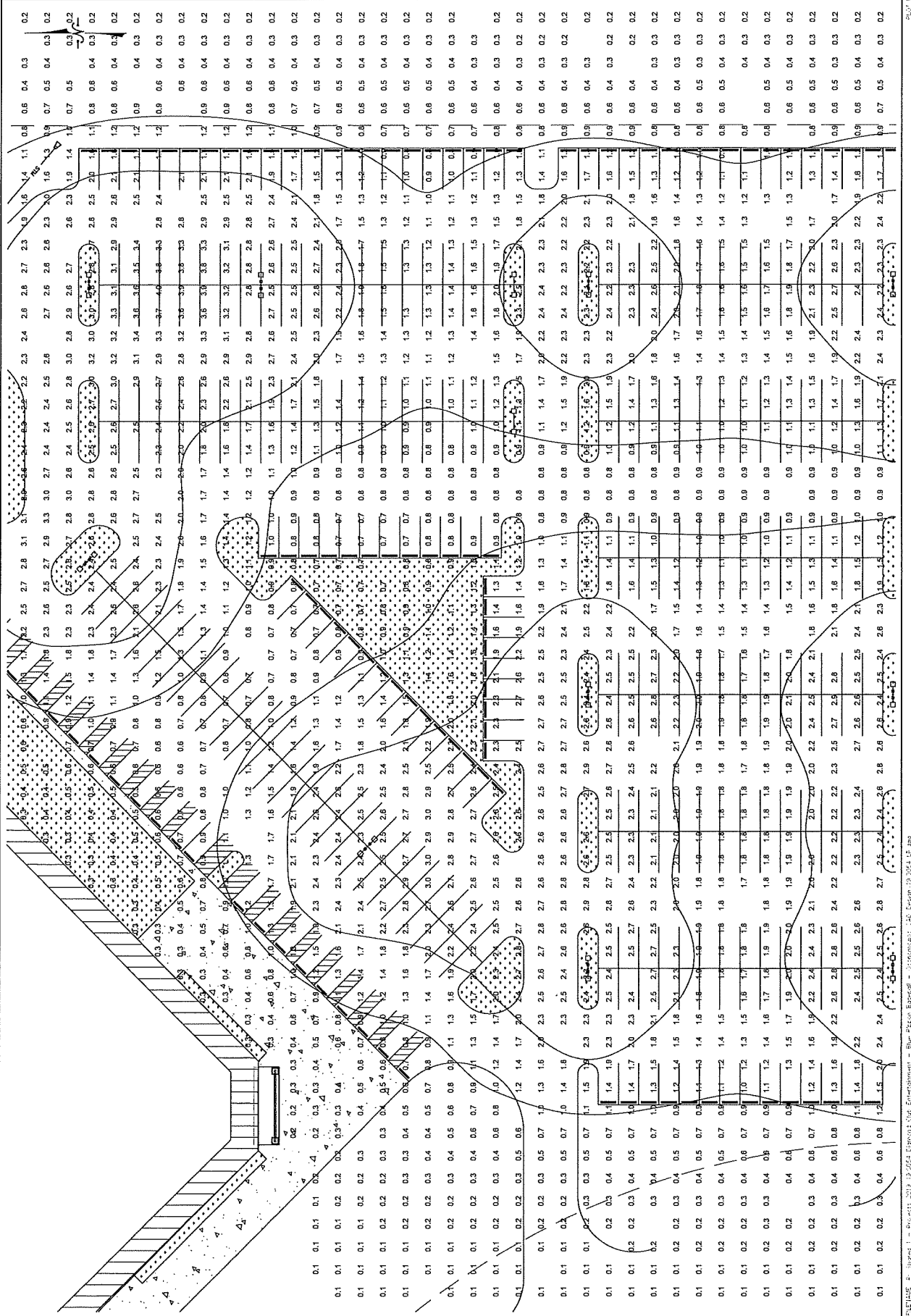
LIGHTING PLAN

NO. _____ BY DATE _____

REVISIONS _____

ISSUED FOR REVIEW

PLAN DATE 01/27/2020
 DESIGNED BY JRM
 SCALE 1" = 20'
 PROJECT NO. 19-0054
 SHEET NO. 4



REV DATE 11/17/2019 11:23:23 AM

LETIMER, P. JAMES L. - Project: 2019-0054 Baseball Site Improvements - Blue Ribbon Baseball - Wisconsin, WI - Design: 19-0054-1P.dwg

